

# Digital Light Processing™ for High-Brightness, High-Resolution Applications

Larry J. Hornbeck

Texas Instruments Incorporated, P.O. Box 655012, MS41, Dallas, TX 75265  
phone: 972-995-2260 • email: hbek@dlep1.itg.ti.com

## ABSTRACT

Electronic projection display technology for high-brightness applications had its origins in the Gretag Eidophor, an oil film-based projection system developed in the early 1940s. A number of solid state technologies have challenged the Eidophor, including CRT-addressed LCD light valves and active-matrix-addressed LCD panels. More recently, in response to various limitations of the LCD technologies, high-brightness systems have been developed based on Digital Light Processing™ technology. At the heart of the DLP™ projection display is the Digital Micromirror Device™ (DMD™), a semiconductor-based array of fast, reflective digital light switches that precisely control a light source using a binary pulsewidth modulation technique.

This paper describes the design, operation, performance, and advantages of DLP-based projection systems for high-brightness, high-resolution applications. It also presents the current status of high-brightness products that will soon be on the market.

**Key Words:** Digital Micromirror Device, DMD, Digital Light Processing, DLP, spatial light modulator, SLM, microelectromechanical systems, MEMS, digital imaging, projection displays.

## 1.0 INTRODUCTION

Large-screen, high-brightness electronic projection displays serve four broad areas of application: (1) Electronic presentations (e.g., business, education, advertising), (2) entertainment (e.g., home theater, sports bars, theme parks, electronic cinema), (3) status and information (e.g., military, utilities, transportation, public, sports) and (4) simulation (e.g., training, games). The electronic presentation market is being driven by the pervasiveness of software that has put sophisticated presentation techniques (including multimedia) into the hands of the average PC user.

A survey of high-brightness (>1000 lumens) electronic projection displays is shown in *Figure 1*. The brightness (lumens) is plotted against the brightness efficiency (lumens/watt). Three types of projection display technologies are compared in Figure 1, oil film, CRT-LCD, and AM-LCD. Developed in the early 1940s at the Swiss Federal Institute of Technology

and later at Gretag AG, oil film projectors (including the GE Talaria) have been the workhorse for applications that require projection displays of the highest brightness [1]. But the oil film projector has a number of limitations including size, weight, power, setup time, stability, and maintenance. In response to these limitations, LCD-based technologies have challenged the oil film projector. These LCD-based projectors are of two general types: (1) CRT-addressed LCD light valves and (2) active-matrix (AM) LCD panels.

LCD-based projectors have not provided the perfect solution for the entire range of high-brightness applications. CRT-addressed LCD light valves have setup time and stability limitations. Most active-matrix LCDs used for high-brightness applications are transmissive and, because of this, heat generated by light absorption cannot be dissipated with a heatsink attached to the substrate. This limitation is mitigated by the use of large-area LCD panels with forced-air cooling. However, it may still be difficult to implement effective cooling at the highest brightness levels.

In response to these and other limitations, as well as to provide superior image quality under the most demanding

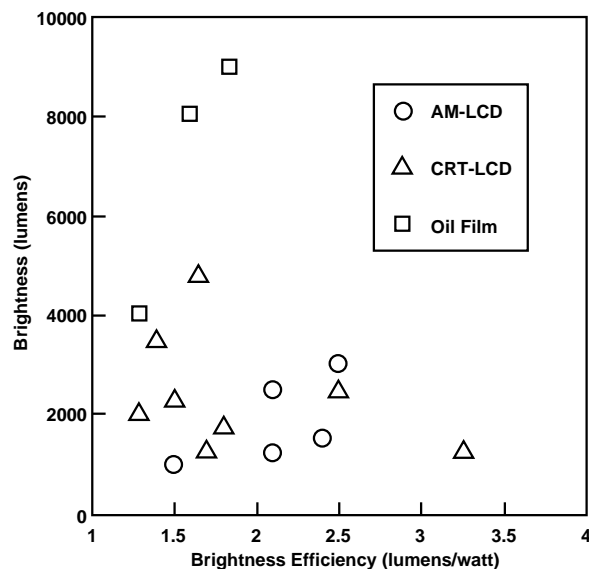


Figure 1. Survey of high-brightness projection displays

environmental conditions, high-brightness projection display systems have been developed based on Digital Light Processing™ technology. DLP™ is based on a microelectromechanical system (MEMS) device known as the Digital Micromirror Device™ (DMD™). The DMD, invented in 1987 at Texas Instruments, is a semiconductor-based array of fast, reflective digital light switches that precisely control a light source using a binary pulsewidth modulation technique. It can be combined with image processing, memory, a light source, and optics to form a DLP system (Figure 2) capable of projecting large, bright, seamless, high-contrast color images. Figure 3 shows a DLP projector in an

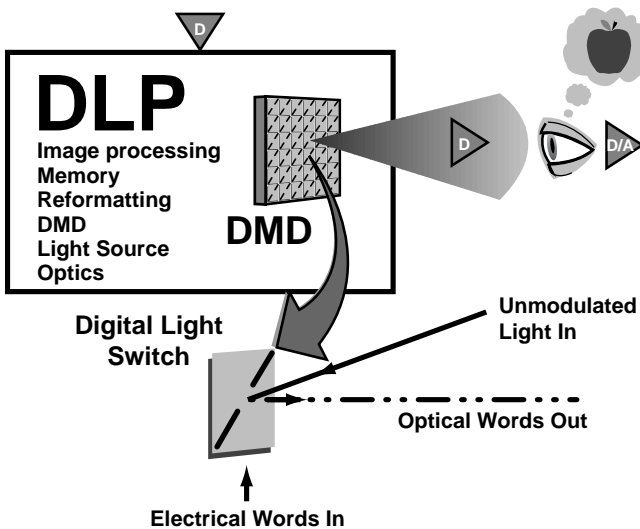


Figure 2. Digital Light Processing system



Figure 3. DLP projector in auditorium environment

auditorium environment. This photo was taken at the Texas Instruments Digital Imaging Business Center in Dallas, Texas.

DLP-based projection displays are well-suited to high-brightness and high-resolution applications: (a) the digital light switch is reflective and has a high fill factor, resulting in high optical efficiency at the pixel level and low pixelation effects in the projected image; (b) as the resolution and size of the DMD increase, the overall system optical efficiency grows because of higher lamp-coupling efficiency; (c) because the DMD operates with conventional CMOS voltage levels (~5 volts), integrated row and column drivers are readily employed to minimize the complexity and cost impact of scaling to higher resolutions; (d) because the DMD is a reflective technology, the DMD chip can be effectively cooled through the chip substrate, thus facilitating the use of high-power projection lamps without thermal degradation of the DMD; and (e) finally, DLP-based systems are all-digital (digital video in, digital light out), so reproduction of the original video source material is accurate and the image quality is stable with time [2].

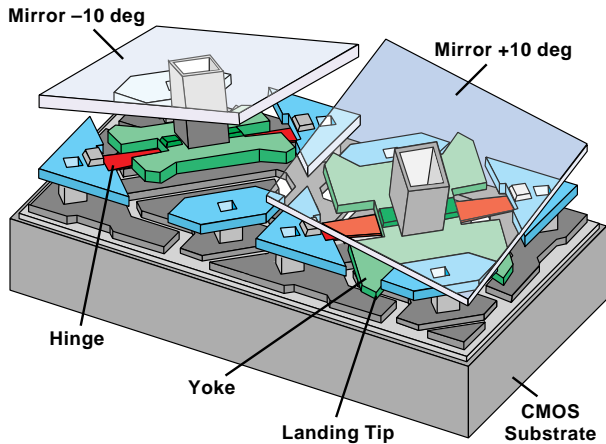
The general movement of the display industry is in the digital direction. Digital sources that are currently available include digital video disk (DVD), digital satellite system (DSS), and the Internet (World Wide Web). In the future, the recently approved Advanced Television Standard (ATV) and the digital distribution of movies (digital cinema) will be added to the list of digital sources. Interfacing these digital sources to currently available analog displays requires digital-to-analog conversion and, in some instances, analog encoding (e.g., s-video or composite), which result in degradation of the source image quality. DLP-based displays, on the other hand, preserve the digital integrity of the source image all the way to the eye. The result is the best possible video quality.

A comprehensive, chronological list of DLP and DMD publications and presentations [2-59] is presented in Section 8.0. The list includes general DLP review papers and papers on early DMD development, system electronics, optics, DMD mechanical modeling, manufacturing, and reliability. It also includes references to DMD-based digital printing technology [4,24,37,56].

## 2.0 DMD LIGHT SWITCH

### 2.1 The mirror as a switch

The DMD light switch (Figure 4) is a member of a class of devices known as microelectromechanical systems. Other MEMS devices include pressure sensors, accelerometers, and microactuators. The DMD is monolithically fabricated by CMOS-like processes over a CMOS memory. Each light switch has an aluminum mirror, 16 μm square, that can reflect light in one of two directions, depending on the state of the underlying memory cell. Rotation of the mirror is accomplished through electrostatic attraction produced by



**Figure 4. Two DMD pixels (mirrors are shown as transparent)**

voltage differences developed between the mirror and the underlying memory cell. With the memory cell in the on (1) state, the mirror rotates to +10 degrees. With the memory cell in the off (0) state, the mirror rotates to -10 degrees. A closeup of DMD mirrors operating in a scanning electron microscope (SEM) is shown in *Figure 5*.

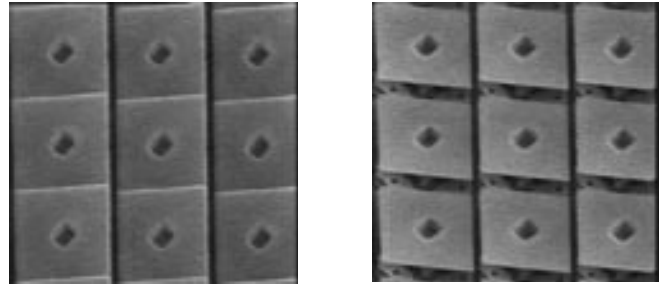
By combining the DMD with a suitable light source and projection optics (*Figure 6*), the mirror reflects incident light either into or out of the pupil of the projection lens by a simple beam-steering technique. Thus, the (1) state of the mirror appears bright and the (0) state of the mirror appears dark. Compared to diffraction-based light switches, the beam-steering action of the DMD light switch provides a superior tradeoff between contrast ratio and the overall brightness efficiency of the system.

## 2.2 Grayscale and color operation

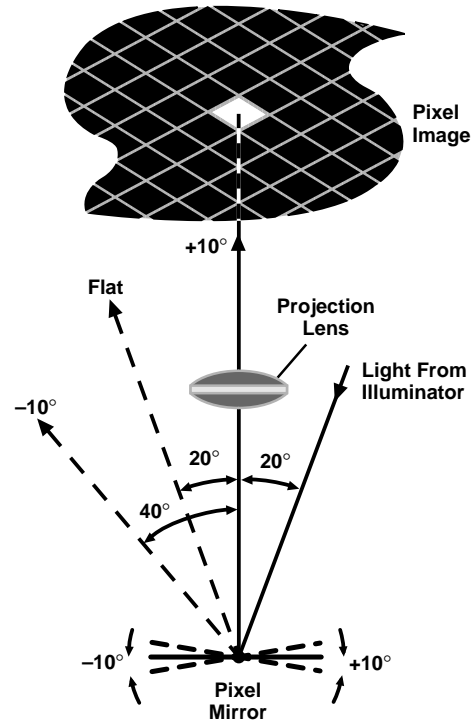
Grayscale is achieved by binary pulsewidth modulation of the incident light. Color is achieved by using color filters, either stationary or rotating, in combination with one, two, or three DMD chips (*Section 3.2*).

The DMD light switch is able to turn light on and off rapidly by the beam-steering action of the mirror. As the mirror rotates, it either reflects light into or out of the pupil of the projection lens, to create a burst of digital light pulses that the eye interprets as an analog image (*Figure 2*). The optical switching time for the DMD light switch is  $\sim 2 \mu\text{s}$ . The mechanical switching time, including the time for the mirror to settle and latch, is  $\sim 15 \mu\text{s}$  [36].

The technique for producing the sensation of grayscale to the observer's eye is called binary pulsewidth modulation. The DMD accepts electrical words representing gray levels of brightness at its input and outputs optical words, which are interpreted by the eye of the observer as analog brightness levels.



**Figure 5. SEM video images of operating DMD**

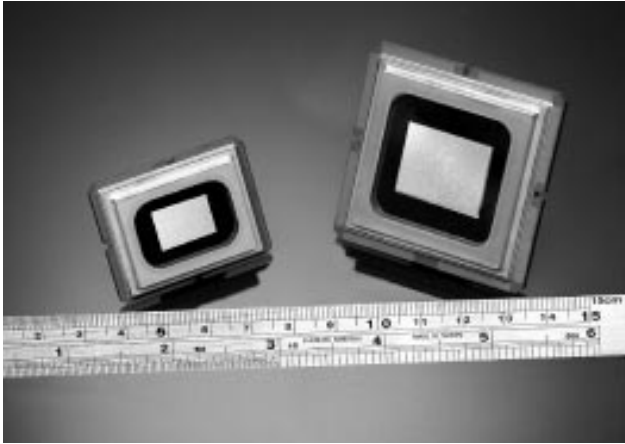


**Figure 6. DMD optical switching principle**

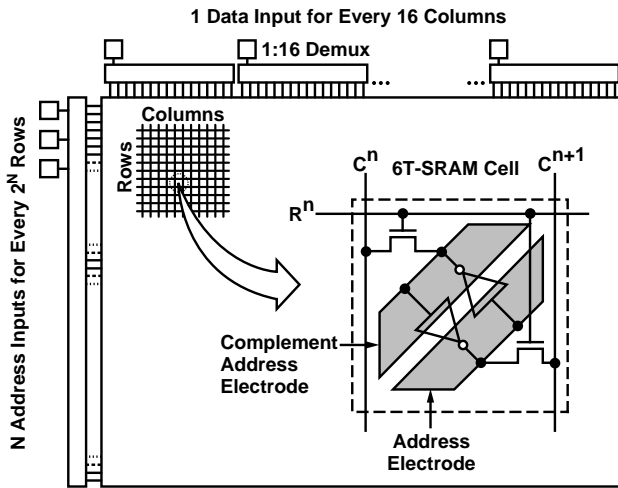
The details of the binary pulsewidth modulation (PWM) technique are illustrated in *Figure 7*. For simplicity, the PWM technique is illustrated for a 4-bit word ( $2^4$  or 16 gray levels). Each bit in the word represents a time duration for light to be on or off (1 or 0). The time durations have relative values of  $2^0, 2^1, 2^2, 2^3$ , or 1, 2, 4, 8. The shortest interval (1) is called the least significant bit (LSB). The longest interval (8) is called the most significant bit (MSB). The video field time is divided into four time durations of  $1/15, 2/15, 4/15$ , and  $8/15$  of the video field time. The possible gray levels produced by all combinations of bits in the 4-bit word are  $2^4$  or 16 equally spaced gray levels (0,  $1/15, 2/15 \dots 15/15$ ). Current DLP systems are either 24-bit color (8 bits or 256 gray levels per primary color) or 30-bit color (10 bits or 1024 gray levels per primary color).

In the simple example shown in *Figure 7*, spatial and temporal artifacts can be produced because of imperfect integration





**Figure 9. Packaged DMD chips**



**Figure 10. Organization of the DMD chip**

wafers then proceed to a plasma etcher that is used to selectively strip the organic sacrificial layers from under the DMD mirror, yoke, and hinges. Following this process, a thin lubrication layer is deposited to prevent the landing tips of the yoke from adhering to the landing pads during operation. Before separating the chips from one another, each chip is tested for full electrical and optical functionality by a high-speed automated wafer tester [55]. Finally, the chips are separated from the wafer, plasma-cleaned, relubricated, and hermetically sealed in a package. Further manufacturing details are contained in references [36, 43, 51, 52, 57].

Figure 9 shows packaged DMD chips in two array sizes, SVGA (800 × 600) and SXGA (1280 × 1024). The diagonals of the active area, as discussed in Section 4.1, are 0.7 in. (SVGA) and 1.1 in. (SXGA).

### 2.4 Electronic operation

The DMD pixel is inherently digital because of the way it is electronically driven [5]. It is operated in an electrostatically

bistable mode by the application of a bias voltage to the mirror to minimize the address voltage requirements. Thus, large rotation angles can be achieved with a conventional 5-volt CMOS address circuit.

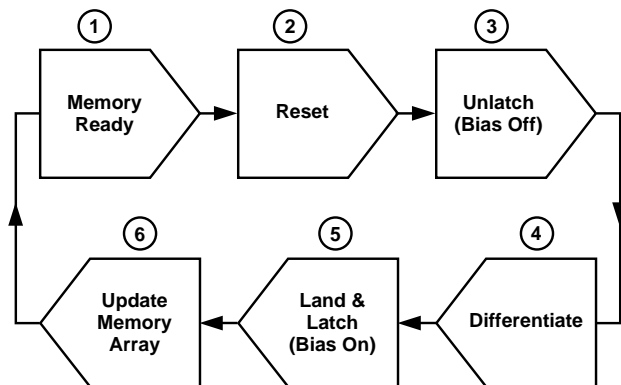
The organization of the DMD chip is shown in Figure 10. Underlying each DMD mirror and mechanical superstructure cell is a six-transistor SRAM. Multiple data inputs and demultiplexers (1:16) are provided to match the frequency capability of the on-chip CMOS with the required video data rates. The pulsewidth modulation scheme for the DMD requires that the video field time be divided into binary time intervals or bit times. During each bit time, while the mirrors of the array are modulating light, the underlying memory array is refreshed or updated for the next bit time. Once the memory array has been updated, all the mirrors in the array are released simultaneously and allowed to move to their new address states.

This simultaneous update of all mirrors, when coupled with the PWM bit-splitting algorithm described in Section 2.2, produces an inherently low-flicker display. Flicker is the visual artifact that can be produced in CRTs as a result of brightness decay with time of the phosphor.

Because CRTs are refreshed in an interlaced scan-line format, there is both a line-to-line temporal phase shift in brightness as well as an overall decay in brightness. DLP-based displays have inherently low flicker because all pixels are updated at the same time (there is no line-to-line temporal phase shift) and because the PWM bit-splitting algorithm produces short-duration light pulses that are uniformly distributed throughout the video field time (no temporal decay in brightness).

Proper operation of the DMD is achieved by using the bias and address sequence shown in Figure 11 and detailed in Table 1.

The bias voltage has three functions. First, it produces a bistable condition to minimize the address voltage require-



**Figure 11. DMD address and reset sequence**

ment, as previously mentioned. In this manner, large rotation angles can be achieved with conventional 5-volt CMOS. Second, it electromechanically latches the mirrors so that they cannot respond to changes in the address voltage until the mirrors are reset. The third function of the bias is to reset the pixels so that they can reliably break free of surface adhesive forces and begin to rotate to their new address states.

Although the metal surfaces of the superstructure are coated with a passivation layer or lubrication layer, the remaining van der Waal or surface forces between molecules require more than the hinge-restoring force to reliably reset the mirrors. A reset voltage pulse applied to the mirror and yoke causes the spring tips of the yoke (*Figure 12*) to flex. As the spring tips unflex, they produce a reaction force that causes the yoke landing tips to accelerate away from the landing pads, producing a reliable release from the surface [52].

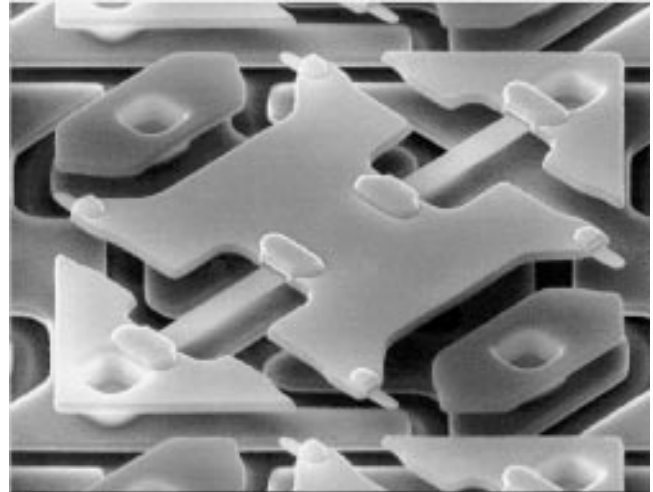
### 2.5 DMD reliability

Steady improvements in DMD reliability have been made [28, 49, 52]. Some of these are listed below:

- A “bipolar reset” address scheme that leads to greater dynamic address margin.
- An improved hinge material that reduces metal creep that can occur under high-duty-factor and high-temperature operating conditions.

**Table 1. DMD address and reset sequence**

<ol style="list-style-type: none"> <li>1. <u>Memory ready</u>—All memory cells under the DMD have been loaded with the new address states for the mirrors.</li> <li>2. <u>Reset</u>—All mirrors are reset in parallel (voltage pulse applied to bias bus).</li> <li>3. <u>Unlatch</u>—The bias is turned off to unlatch mirrors and allow them to release and begin to rotate to flat state.</li> <li>4. <u>Differentiate</u>—Retarding fields are applied to the yoke and mirrors in order to rotationally separate the mirrors that remain in the same state from those that are to cross over to a new state.</li> <li>5. <u>Land and latch</u>—The bias is turned on to capture the rotationally separated mirrors and enable them to rotate to the addressed states, then settle and latch.</li> <li>6. <u>Update memory array</u> (one line at a time)—The bias remains turned on to keep the mirrors latched so as to prevent them from responding to changes in the memory, while the memory is written with new video data.</li> <li>7. <u>Repeat sequence</u> beginning at step 1.</li> </ol>
---



**Figure 12. SEM photomicrograph of yoke and spring tips (mirror removed)**

- Improved packaging techniques that preserve the “lubricity” of the landing surface over a wide range of environmental conditions.
- A new architecture that incorporates spring tips at the landing tip of the yoke. The result is greater operating margins as the yoke releases (resets) from the underlying surface.
- A particle reduction program that has dramatically reduced particle contamination within the DMD package.

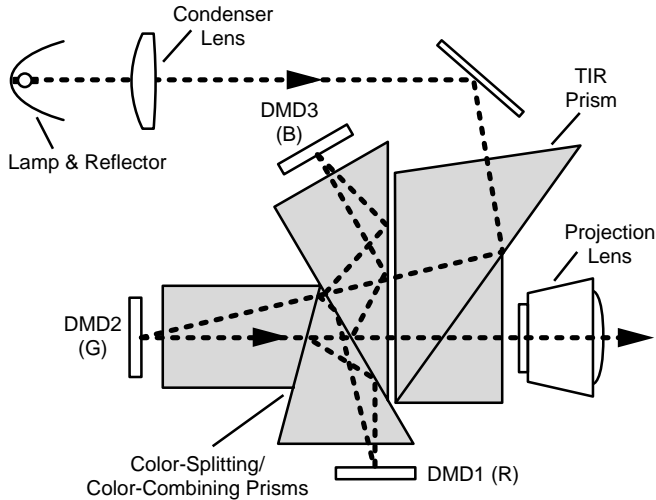
The DMD has passed a series of tests to simulate actual DMD environmental operating conditions, including thermal shock, temperature cycling, moisture resistance, mechanical shock, vibration, and acceleration testing and has passed all of these tests. In addition to these, other tests have been conducted to determine the long-term result of repeated cycling of mirrors between the on and off states. Mirror cycling tests look for hinge fatigue (broken hinges) and failure of the mirrors to release because of increased adhesion (reset failure). To date, in accelerated tests, a lifetime of more than 765 billion cycles has been demonstrated (equivalent lifetime >76,000 hours) for a 10-bit/primary color, three-chip projector configuration).

## 3.0 DLP SYSTEM DESCRIPTION AND OPERATION

### 3.1 System design [20, 27, 42].

*Figure 13* illustrates a generic three-chip DLP system broken down into its functional components (video front-end, digital processor, digital formatter, and digital display). The generic video front-end accepts a variety of video sources (digital, digital compressed, digital graphics, analog composite, analog s-video, and analog graphics). The video front-end performs the functions of decompression, decoding, and ana-





**Figure 14. DLP three-chip optical system**

yield higher brightness performance but are primarily intended to compensate for the color deficiencies resulting from spectrally imbalanced lamps (e.g., the red deficiency in many metal halide lamps). For the highest brightness applications, three-chip systems are required.

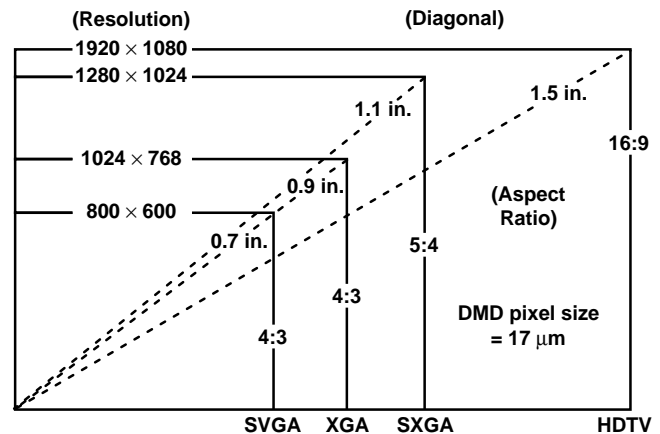
A DLP optical system with three chips is shown in *Figure 14*. Because the DMD is a simple array of reflective light switches, no polarizers are required. Light from a metal halide or xenon lamp is collected by a condenser lens. For proper operation of the DMD light switch, this light must be directed at 20 degrees relative to the normal of the DMD chip (*Figure 6*). To accomplish this in a method that eliminates mechanical interference between the illuminating and projecting optics, a total internal reflection (TIR) prism is interposed between the projection lens and the DMD color-splitting/-combining prisms.

The color-splitting/-combining prisms use dichroic interference filters deposited on their surfaces to split the light by reflection and transmission into red, green, and blue components. The red and blue prisms require an additional reflection from a TIR surface of the prism in order to direct the light at the correct angle to the red and blue DMDs. Light reflected from the on-state mirrors of the three DMDs is directed back through the prisms and the color components are recombined. The combined light then passes through the TIR prism and into the projection lens because its angle has been reduced below the critical angle for total internal reflection in the prism air gap.

A DLP three-chip prototype projection engine is shown in *Figure 15*. It projects 1100 lumens with a 500-watt xenon lamp. The size of the engine is 19.5 × 12.8 × 10 in. and it weighs 38 pounds. One of the DMD package assemblies with thermoelectric cooler and fan is visible.



**Figure 15. DLP three-chip prototype projection engine**



**Figure 16. DMD resolution versus chip diagonal**

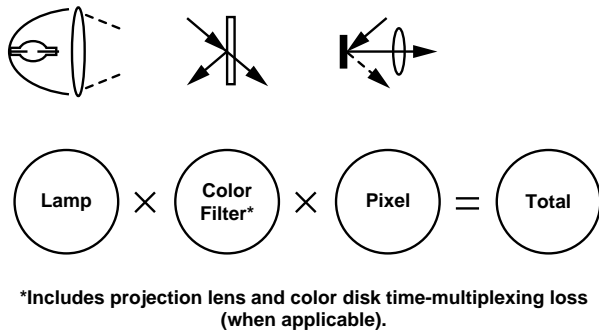
## 4.0 DISPLAY PERFORMANCE

### 4.1 Resolution

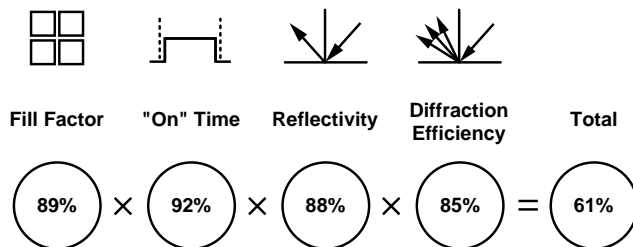
DLP projection systems have been demonstrated at a variety of resolutions (and aspect ratios), VGA (640 × 480), SVGA (800 × 600) and SXGA (1280 × 1024). A 16:9 aspect ratio high-definition (1920 × 1080) DLP projection system has also been demonstrated [20, 27, 35]. Currently there are DLP-based products on the market for business applications at SVGA resolution. Both professional (high-brightness) and business products will be available at XGA resolution by the end of 1997. SXGA products will follow in 1998.

The DMD family of chips uses a common pixel design having a 16 μm mirror arrayed with a 17 μm pixel pitch. As the DMD resolution is increased, the pixel pitch is held constant and the chip diagonal is allowed to increase (*Figure 16*). This approach to the chip design has several advantages: (1) the high optical efficiency and contrast ratio of the pixel is maintained at all resolutions, (2) pixel timing is common to all





**Figure 17. Optical efficiency of DLP projection system**



**Figure 18. Optical efficiency of DMD pixel**

designs and high address margins are maintained, and (3) the chip diagonal increases with resolution, which improves the DMD system optical efficiency (see Section 4.2).

#### 4.2 Optical efficiency and brightness

The optical efficiency of the DLP projection system is the product of the efficiencies shown in *Figure 17*, namely the lamp/reflector, color filter/projection lens, and pixel efficiencies.

The pixel efficiency is composed of the product of the efficiencies shown in *Figure 18*, namely the fill factor, mirror “on” time, reflectivity, and diffraction efficiency. For the DMD pixel design used today, the pixel efficiency is 61% [44].

The color filter/projection lens efficiency depends on the dichroic filter reflection and absorption losses and reflection losses in the projection lens elements. For one-chip or two-chip DMD systems that use a rotating color disk, there is an additional loss associated with the time-multiplexing of the colors.

The lamp/reflector efficiency depends on the amount of collected light that can be used by the DMD: This is a function of the arc length of the lamp, the reflector geometry, the area of the mirror array, and the cone angle ( $f/\#$ ) of the illumination and projection lens.

To understand the relationship of these parameters and their influence on the lamp/reflector efficiency, it is useful to use the concept of *etendue*, which is also known as “optical extent” or the “optical invariant.” *Etendue* is a measure of the

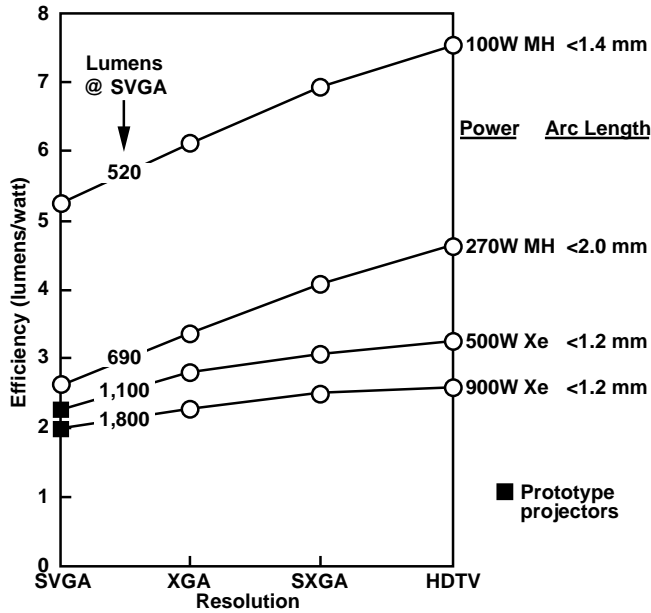
area of the light distribution, convolved with the solid angle of the light [60].

When a beam is modified by a well-corrected optical element, *etendue* is preserved. For example, when a well-corrected lens focuses a collimated beam to a spot, the area of the beam is reduced, but the divergence angle of the beam increases and *etendue* is preserved. The lamp/reflector combination has an *etendue*. The DMD/projection lens combination also has an *etendue*. If the *etendue* of the DMD/projection lens is smaller than that of the lamp/reflector, then the system is said to be *etendue*-limited. In this case, not all of the collected light from the lamp/reflector can be used by the DMD/projection lens. This is the case for all lamps but those with the shortest arc lengths.

To maximize the lamp reflector efficiency, it is necessary to minimize the *etendue* of the lamp in relation to that of the DMD/projection lens. The *etendue* of the DMD/projection lens is given by  $E = \pi A/4f^2$ , where  $A$  is the area of the DMD and  $f$  is the  $f/\#$  of the projection lens. The  $f/\#$  of the projection lens for the DMD is determined by the mirror rotation angle of  $\pm 10$  degrees. To adequately separate the on-state light from the diffracted light produced by the mirror edges and substrate and to maximize contrast ratio, an  $f/\#$  no smaller than  $f/2.8$  is required. To preserve adequate contrast ratio in the resulting projected image, the DMD projection lens is typically fixed at  $f/3.0$ . Thus the DMD/projection lens *etendue* is determined solely by the area (resolution) of the DMD and increases with resolution.

For a given resolution DMD, the lamp/reflector efficiency *increases* as the lamp arc length (and *etendue*) *decreases*. For this reason, short arc length lamps (<2 mm) are chosen for DLP applications. For a given lamp *etendue*, the lamp/reflector efficiency *increases* as the resolution (and *etendue*) of the DMD *increases*. This latter relationship is shown graphically in *Figure 19*, where the modeled optical efficiency (lumens/watt) of DLP three-chip projectors is shown plotted versus DMD resolution for lamps of various powers. The SVGA resolution optical efficiencies (for the 500- and 900-watt lamps) are actual measurements from prototype projectors. Also shown is the total luminous flux in lumens that can be delivered at SVGA resolution.

For lower lamp power (lower brightness applications), the highest optical efficiencies are achieved with metal halide (MH) lamps because of their high luminous efficacy. However, as the lamp power is increased, the arc length of metal halide lamps must grow more rapidly than that of xenon (Xe) lamps to preserve lamp lifetime (typically determined by the time for the brightness to diminish to 50% of the stabilized brightness of a new lamp). Therefore, in DLP applications (for power levels above ~300 watts), xenon lamps, because of their shorter arc, provide better lamp/reflector collection efficiencies and higher overall system performance.

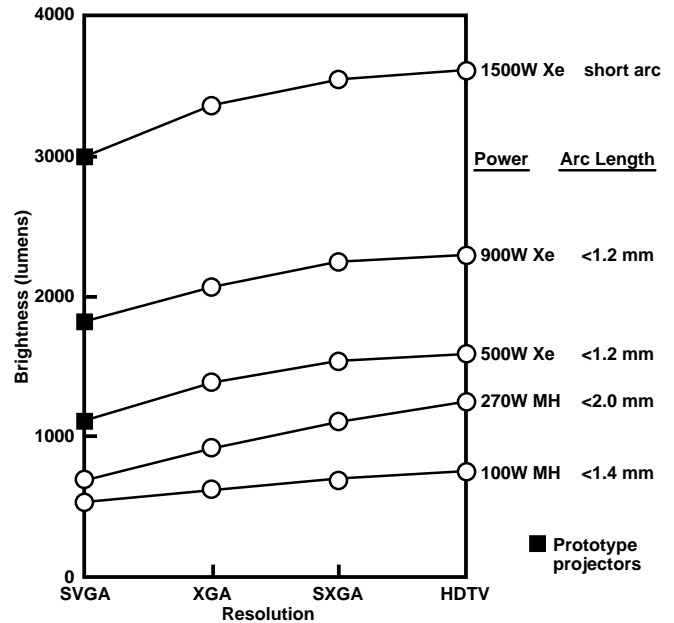


**Figure 19. Modeled optical efficiency (lumens/watt) versus resolution for DLP three-chip projectors**

It should be noted that a large color gamut and good color balance (particularly for flesh tones) are important in high-brightness applications such as digital cinema. Although metal halide lamps have a higher efficacy (lumens/watt) compared to xenon, not all of the luminous output can be used if color balance is to be preserved. Most metal halide lamps are typically characterized by having strong green (mercury) and greenish yellow (sodium) emission lines. These lines carry a significant portion of the lamp's luminous output. However, for proper color balance, these lines must be attenuated, with a resulting drop in the effective efficacy of the lamp.

Often it is difficult to compare projection system performance (in terms of optical efficiency) of systems using xenon lamps versus those that use metal halide lamps. Unless the color balance for these systems is adjusted to the same specification (e.g., SMPTE-C RGB points and a D65 luminant color balance), the luminous output of metal halide systems will naturally be overstated. Therefore, the lamps of *Figures 19* and *20* have been color-balanced to achieve a valid comparison of their performance.

In *Figure 20*, the modeled brightness (lumens) of DLP three-chip projectors is plotted versus DMD resolution for lamps of various powers. For the 500-, 900-, and 1,500-watt lamps, the SVGA resolution brightness levels are actual measurements from prototype projectors. Brightness levels up to 3000 lumens at SVGA resolution have been demonstrated with short arc xenon lamps. The modeled performance at HDTV resolutions with current lamps is projected to be 3600 lumens. With further improvements in short-arc xenon lamp technol-



**Figure 20. Modeled brightness versus resolution for DLP three-chip projectors**

ogy, Digital Projection Ltd. (formerly Rank-Brimar) anticipates that brightness levels in excess of 10,000 lumens will be achieved in DLP brand products as resolution and format approach HDTV standards.

### 4.3 Maximum brightness

At high luminous flux densities (lumens/cm<sup>2</sup>), optical absorption creates heating effects. Excessive temperature can cause degradation of performance for both LCDs and DMDs. In the case of LCDs, excessive heating causes degradation of the polarizers. Furthermore, without adequate cooling of the LCD panel, the temperature of the LCD material can rise above its clearing temperature  $T_c$ . This renders the LCD material useless for polarization rotation and the display fails. For transmissive AM-LCD panels, a heatsink cannot be attached to the substrate, so forced air cooling must be relied upon. Larger transmissive panels mitigate this problem. Currently, AM-LCD projectors having 3000-lumen outputs use 5.8 × 5.8 in. panels.

Excessive temperatures can also affect the long-term reliability of the DMD by accelerating hinge deformation (metal creep) that can occur under high-duty-factor operation of the mirror. Special hinge alloys have been developed to minimize this deformation and guarantee reliable operation [52]. High duty factors occur when the mirror is operated in one direction for a much greater part of the time, on average, than in the other direction. For example, 95/5 duty factor operation means that a mirror is 95% of the time at one rotation angle (e.g., -10 degrees) and 5% of the time at the other rota-

tion angle (e.g., +10 degrees). This situation would correspond to DMD operation with a video source having a temporal average brightness of 5% (or 95%) of the peak brightness. Although these extreme temporal averages are unlikely to occur for extended periods of time, 95/5 duty factor is chosen as a worst case reliability test condition for hinge deformation. With current hinge metal alloys, long-term, reliable DMD operation at the 95/5 duty factor is assured, provided the operating temperature of the hinge is limited to <65°C.

For high-brightness applications, the mirrors can absorb enough energy to raise the hinge temperature above 65°C unless active cooling is applied to the package. Because the DMD is reflective and built on a single-crystal silicon (X-silicon) backplane, the absorbed heat can be efficiently extracted by connecting a thermoelectric cooler (TEC) to the backside of the DMD package. In *Figure 15*, one of the DMD package assemblies with the thermoelectric cooler is visible. The DMD package contains a “thermal via” to provide a low-thermal-impedance path between the DMD chip and the TEC. A thermal model predicts that for a three-chip SXGA projector producing 10,000 screen lumens, the hinge temperature can be held to <65°C (with TEC cooling and an internal ambient air temperature of 55°C).

#### 4.4 Contrast ratio

The inherent contrast ratio of the DMD is determined by measuring the ratio of the light flux with all pixels turned on versus the flux with all pixels turned off. The system contrast ratio is determined by measuring the light flux ratio between bright and dark portions of a 4 × 4 checkerboard image according to ANSI specifications. The checkerboard measurement takes into account light scatter and reflections in the lens, which can degrade the inherent contrast ratio of the DMD.

The full on/off contrast ratio determines the dark level for scenes having a low average luminance level (e.g., outdoor night scenes) as well as the video black level. The checkerboard contrast ratio is a measure of the contrast for objects in scenes containing a full range of luminance levels.

The inherent contrast ratio of the DMD is limited by light diffraction from the mirror edges, from the underlying substrate, and from the mirror via (the metallized hole in the middle of the mirror that acts as the mirror support post, as shown in *Figure 4*). Recent architectural improvements to the DMD pixels have led to improved contrast ratios (*Table 2*) [61]. Further improvements are expected.

#### 4.5 Accuracy and stability

Current high-brightness projection displays for use in the audio/visual rental and staging business and for private and corporate use have a number of limitations. These include warmup or stabilization time; setup time for convergence,

**Table 2. Contrast ratio for standard and improved pixel architecture in a prototype system**

	Original Design	New Design
Full on/full off	255:1	370:1
Checkerboard (4 × 4)	142:1	177:1
<b>Note: All data for f/3.0 projection lens.</b>		

color balance, and gamma; and, finally, the stability of the image quality once the system is operating. Maintaining stability over a wide range of environmental conditions encountered in outdoor applications is particularly difficult. For video wall applications or other applications requiring multiple side-by-side projectors, the setup time to make all of the displays look identical is often unacceptable. Even when great care has been taken in this procedure, lack of stability makes periodic adjustments necessary.

DLP-based projection systems offer the potential of short setup time and stable, adjustment-free images. Initial stabilization time is minimal. Convergence is fixed by internal alignment of the three DMDs and is stable with time and independent of throw distance. Color balance, uniformity, and gamma are digitally controlled by pulsewidth modulation and are not affected by temperature. Brightness rolloff is stable (fixed by a light integrator) and can be made small to accommodate video wall applications.

### 5.0 DLP BRAND PRODUCTS

Texas Instruments is teamed with numerous projection display manufacturers spanning the business (conference room), consumer (home theater), and professional (high-brightness) markets [62]. DLP brand products and prototypes serving all three market segments have been demonstrated at numerous trade shows including Cedia, Comdex, CES, Infocomm, EID, IFA, JES, Photokina, Photonics West, SID, and Satis. Shipments of the first DLP brand business projectors began in March 1996. Soon the first consumer and professional products will be available on the market.

Currently, Digital Projection Ltd., Electrohome, and Sony are developing high-brightness DLP brand products with SVGA resolution and brightness levels ranging from 1100 lumens to 3000 lumens. Announcements of the first DLP brand professional products is expected in the first quarter of 1997.

### 6.0 SUMMARY

DLP brand projection displays are well-suited to high-brightness and high-resolution applications. The digital light switch is reflective and has a high fill factor that results in high optical efficiency at the pixel level and low pixelation effects in the projected image. The DMD family of chips uses a common pixel design and a monolithic CMOS-like process. These

factors, taken together, mean that scaling to higher resolutions is straightforward, without loss of pixel optical efficiency. At higher resolutions, the DLP brand projector becomes even more efficient in its use of light because of higher lamp-coupling efficiency. Because the DMD is a reflective technology, the DMD chip can be effectively cooled through the chip substrate, thus facilitating the use of high-power projection lamps without thermal degradation of the DMD. DLP brand systems are all-digital (digital video in, digital light out) that give accurate, stable reproduction of the original source material.

DLP brand projectors for the business (conference room) application are currently on the market. Soon, the first consumer (home theater) products will be available. DLP brand projection system prototypes for professional (high-brightness) applications have been demonstrated at up to 3000-lumen brightness for SVGA resolution. Soon, high-brightness SVGA products will be on the market, followed by XGA and SXGA products. With anticipated improvements in short-arc xenon lamp technology, it is expected that brightness levels in excess of 10,000 lumens should be achievable in DLP brand products of the future, as resolution and format approach HDTV standards.

## 7.0 ACKNOWLEDGEMENTS

The author wishes to acknowledge the numerous contributions of the Texas Instruments Digital Imaging staff, with special thanks to the following individuals for their many helpful suggestions during the preparation of this manuscript: Scott Dewald, Mike Douglass, Jim Florence, Richard Gale, Richard Knipe, Vishal Markandey, Greg Pettitt, Frank Poradish, and Peter van Kessel.

Special thanks also go to the editors, Sara Kay Powers and Carolyn Banks; Larry Norton, the illustrator; and the capable staff of CR&D Publishing Services.

## 8.0 REFERENCES

[1] E. Baumann, "The Fischer Large-Screen Projection System," *J. SMPTE*, Vol. 60, pp. 344-356 (April 1953).  
 [2] R.J. Gove, "DMD Display Systems: The Impact of an All-Digital Display," Society for Information Display International Symposium (June 1994).  
 [3] L.J. Hornbeck and W.E. Nelson, "Bistable Deformable Mirror Device," *OSA Technical Digest Series, Vol. 8, Spatial Light Modulators and Applications*, p. 107 (1988).  
 [4] W.E. Nelson and L.J. Hornbeck, "Micromechanical Spatial Light Modulator for Electrophotographic Printers," *SPSE Fourth International Congress on Advances in Non-Impact Printing Technologies*, p. 427 (March 20, 1988).  
 [5] L.J. Hornbeck, "Deformable-Mirror Spatial Light Modulators (Invited Paper)," *Spatial Light Modulators and Applications III, SPIE Critical Reviews*, Vol. 1150, pp. 86-102 (August 1989).

[6] T.J. Sheerer, W.E. Nelson, and L.J. Hornbeck, "FEM Analysis of a DMD," *Seventeenth Nastram User Colloquium, NASA Conf. Pub. 3029*, p. 290 (1989).  
 [7] J.B. Sampsell, "An Overview of Texas Instruments Digital Micromirror Device (DMD) and Its Application to Projection Displays," *Society for Information Display Internatl. Symposium Digest of Tech. Papers*, Vol. 24, pp. 1012-1015 (May 1993).  
 [8] L.J. Hornbeck, "Current Status of the Digital Micromirror Device (DMD) for Projection Television Applications (Invited Paper)," *International Electron Devices Technical Digest*, pp. 381-384 (1993).  
 [9] J.M. Younse and D.W. Monk, "The Digital Micromirror Device (DMD) and Its Transition to HDTV," *Proc. of 13th International Display Research Conf. (Late News Papers)*, pp. 613-616 (August 31-September 3, 1993).  
 [10] J.B. Sampsell, "The Digital Micromirror Device," *7th ICSS&A*, Yokohama, Japan (1993).  
 [11] J.M. Younse, "Mirrors on a Chip," *IEEE Spectrum*, pp. 27-31 (November 1993).  
 [12] J.M. Younse, "DMD Projection Display Technology (Invited Talk)," IEEE Multimedia Symposium, Richardson, TX (April 19, 1994).  
 [13] M.A. Mignardi, "Digital Micromirror Array for Projection TV," *Solid State Technology*, Vol. 37, pp. 63-66 (July 1994).  
 [14] K. Ohara and R.J. Gove, "DMD Display and Its Video Signal Processing," The Institute of Television Engineers Japan 1994 Annual Convention, ITEC '94, Saga, Japan (July 1994).  
 [15] V. Markandey, T. Clatanoff, R. Gove, K. Ohara, "Motion Adaptive Deinterlacer for DMD (Digital Micromirror Device) Based Digital Television," *IEEE Trans. on Consumer Electronics*, Vol. 40, No. 3, pp. 735-742 (August 1994).  
 [16] J.M. Younse, "Commercialization of Digital Micromirror Display Technology," Conference for Commercialization of Microsystems, Banff, Alberta, Canada (September 13, 1994).  
 [17] D. Monk and R. Gale, "The Digital Micromirror Device for Projection Display (Invited Paper)," *Microelectronic Engineering*, Vol. 27, pp. 489-493 (1995).  
 [18] V. Markandey and R. Gove, "Digital Display Systems Based on the Digital Micromirror Device," SMPTE 136th Technical Conference and World Media Expo (October 1994).  
 [19] D.W. Monk, "Digital Micromirror Device Technology for Projection Displays," EID Exhibition & Conference, Sandown, UK (October 26, 1994).  
 [20] R.J. Gove, V. Markandey, S. Marshall, D. Doherty, G. Sextro, and M. DuVal, "High Definition Display System Based on Digital Micromirror Device," International Workshop on HDTV (HDTV'94), International Institute for Communications, Turin, Italy (October 1994).  
 [21] J.B. Sampsell, "An Overview of the Performance

Envelope of Digital Micromirror Device Based Projection Display Systems,” *SID 94 Digest*, pp. 669-672 (1994).

[22] C. Tew, L. Hornbeck, J. Lin, E. Chiu, K. Kornher, J. Conner, K. Komatsuzaki, and P. Urbanus, “Electronic Control of a Digital Micromirror Device for Projection Displays (Invited Paper),” *IEEE International Solid-State Circuits Digest of Technical Papers*, Vol. 37, pp. 130-131 (1994).

[23] G.A. Feather and D.W. Monk, “The Digital Micromirror Device for Projection Display,” IEEE International Conference on Wafer Scale Integration, San Francisco, CA (January 18-20, 1995).

[24] W.E. Nelson and R.L. Bhuva, “Digital Micromirror Device Imaging Bar for Hardcopy,” Color Hardcopy and Graphic Arts IV, *SPIE*, Vol. 2413, San Jose, CA (February 1995).

[25] E. Chiu, C. Tran, T. Honzawa, and S. Namaga, “Design and Implementation of a 525 mm<sup>2</sup> CMOS Digital Micromirror Device (DMD) Chip,” *Proc. 1995 International Symposium of VLSI Technology Conf.*, p. 127, Taipei, Taiwan (1995).

[26] B.R. Critchley, P.W. Blaxtan, B. Eckersley, R.O. Gale, and M. Burton, “Picture Quality in Large-Screen Projectors Using the Digital Micromirror Device,” *SID 95 Digest*, pp. 524-527 (1995).

[27] G. Sextro, T. Ballew, and J. Iwai, “High-Definition Projection System Using DMD Display Technology,” *SID 95 Digest*, pp. 70-73 (1995).

[28] M.R. Douglass and D.M. Kozuch, “DMD Reliability Assessment for Large-Area Displays,” *Society for Information Display International Symposium Digest of Technical Papers*, Vol. 26 (Applications Session A3), pp. 49-52 (May 23-25, 1995).

[29] G. Feather, “Digital Light Processing™: Projection Display Advantages of the Digital Micromirror Device™,” 19th Montreux Television Symposium (June 1995).

[30] J.M. Younse, “DMD Microelectromechanical (MEMS) Technology (Keynote Address),” Society of Experimental Mechanics (SEM) UACEM Conference, Worcester, MA, (July 6, 1995).

[31] J.M. Younse, “DMD Display Technology (Invited Talk),” Naval Research Center, Washington, DC (September 5, 1995).

[32] G. Hewlett and W. Werner, “Analysis of Electronic Cinema Projection With the Texas Instruments Digital Micromirror Device™ Display System,” 137th SMPTE Technical Conference, Los Angeles, CA (September 6-9, 1995).

[33] J.M. Younse, “DMD Display Technology (Invited Talk),” U.S. Government’s Large Display Working Group Meeting, NUWC, Newport, RI (September 21, 1995).

[34] T. Hogan, J. Hortaleza, “Low Temperature Gold Ball Bonding for Micromechanical Device Interconnections,” Ultrasonic Industry Association, Columbus, OH (October 18, 1995).

[35] J.M. Younse, “Projection Display Systems Based on

the Digital Micromirror Device (DMD),” SPIE Conference on Microelectronic Structures and Microelectromechanical Devices for Optical Processing and Multimedia Applications, Austin, TX, *SPIE Proceedings*, Vol. 2641, pp. 64-75 (October 24, 1995).

[36] L.J. Hornbeck, “Digital Light Processing and MEMS: Timely Convergence for a Bright Future (Invited Plenary Paper),” *Proc. SPIE*, Vol. 2639, Micromachining and Microfabrication Process Technology, p. 2 (1995)—Abstract Only. Color reprint of complete paper available. Call 1-888-DLP-BYTI (1-888-357-2984).

[37] W.E. Nelson, “Tutorial on Optical Printheads,” IS&T Eleventh International Congress on Advances in Non-Impact Printing Technologies, Hilton Head, SC (October 29, 1995).

[38] L. Yoder, “The Fundamentals of Using the Digital Micromirror Device (DMD) for Projection Displays,” *Proc. International Conference on Integrated Micro/Nanotechnology for Space Applications*, sponsored by NASA and Aerospace Corp., Houston, TX (October 30-November 3, 1995).

[39] J. Iwai, G. Sextro, “High-Definition Projection System Using DMD Technology,” IEEE 1995 International Workshop on HDTV and the Evolution of Television, Taipei, Taiwan (November 15-17, 1995).

[40] G. Deffner, “Eye Movement Recordings to Study Determinants of Image Quality in New Display Technology,” *Eye Movement Research*, pp. 479-490, J.M. Findlay, R. Walker, and R.W. Kentridge (eds.), Elsevier, Amsterdam (1995).

[41] D. Fritsche, V. Liu, V. Markandey, and S. Heimbuch, “Integration of Today’s Digital State With Tomorrow’s Visual Environment,” *Proc. SPIE*, Vol. 2650, Projection Displays II, pp. 9-17 (1996).

[42] V. Markandey, T. Clatanoff, and G. Pettitt, “Video Processing for DLP Display Systems,” SPIE Photonics West ’96, San Jose, CA (January 27-February 2, 1996).

[43] R. Howell and M. Mignardi, “Fabrication of the Digital Micromirror Device (Invited Paper),” SID Displaywork 1996, Manufacturing Technology Conference (February 7, 1996).

[44] J. Florence and L. Yoder, “Display System Architectures for Digital Micromirror Device (DMD) Based Projectors,” *Proc. SPIE*, Vol. 2650, Projection Displays II, pp. 193-208 (1996).

[45] V. Markandey, G. Hewlett, and G. Pettitt, “Digital Light Processing: The Convergence of Television and Computer Display,” *30th SMPTE Advanced Technical Conference 1996 Proceedings*, pp. 150-160 (1996).

[46] D. Monk, “Digital Light Processing With the Digital Micromirror Device,” Electronic Displays ’96, Chemnitz, Germany (April 24-25, 1996).

[47] G. Pettitt, A. DeLong, and A. Harriman, “Colorimetric Performance Analysis for a Sequential Color DLP Projection System,” SID ’96, San Diego, CA (May 1996).

- [48] R.G. Fielding, M. Burton, and T. Bartlett, "Colorimetry Performance of a High Brightness DMD Based Optical System," SID '96, San Diego, CA (May 1996).
- [49] M.R. Douglass and C. Malemes, "Reliability of Displays Using Digital Light Processing," SID '96, San Diego, CA (May 1996).
- [50] L.J. Hornbeck, "Digital Light Processing: A New MEMS-Based Display Technology (Keynote Address)," *Technical Digest of the IEEJ 14th Sensor Symposium*, pp. 297-304, Kawasaki, Japan (June 4-5, 1996).
- [51] L.J. Hornbeck, "Digital Light Processing and MEMS, Reflecting the Digital Display Needs of the Networked Society (Invited Plenary Paper)," *SPIE Europto Proceedings*, Vol. 2783, pp. 2-13 Besancon, France (June 12-13, 1996).
- [52] R.L. Knipe, "Challenges of a Digital Micromirror Device: Modeling and Design," *SPIE Europto Proceedings*, Vol. 2783, pp. 135-145 (June 12-13, 1996).
- [53] V. Markandey and G. Hewlett, "Digital Light Processing: A DSP Powered Multimedia Display," *DSP & Multimedia Technology*, Vol. 5, No. 4 (July/August 1996).
- [54] L.J. Hornbeck, "Digital Light Processing and MEMS: An Overview (Invited Paper)," *Digest of IEEE/LEOS 1996 Summer Topical Meetings, Optical MEMS and Their Applications*, WA3, pp. 7-8, Keystone, CO (August 5-9, 1996).
- [55] F. Skaggs, "Automatic Testing of the Digital Micromirror Device (DMD)," *Digest of IEEE/LEOS 1996 Summer Topical Meetings, Optical MEMS and Their Applications*, WB2, pp. 11-12, Keystone, CO (August 5-9, 1996).
- [56] W.E. Nelson, "Digital Light Processing for Color Printing (Invited Paper)," *Digest of IEEE/LEOS 1996 Summer Topical Meetings, Optical MEMS and Their Applications*, WC3, pp. 19-20, Keystone, CO (August 5-9, 1996).
- [57] M. Mignardi, R. Howell, "The Fabrication of the Digital Micromirror Device," EF/SEMI Conference, Commercialization of Microsystems '96, Kona, HI (October 6-11, 1996). Proceedings in progress.
- [58] L.J. Hornbeck, "Digital Light Processing for Projection Displays: A Progress Report (Invited Paper)" *SID EuroDisplay '96, Proceedings of the 16th International Display Research Conference*, pp. 67-71, Birmingham, England (October 14-18, 1996).
- [59] L.J. Hornbeck, "DLP (Digital Light Processing) für ein Display mit Mikrospiegel-Ablenkung," *Fernseh-und Kino-Technik*, pp. 555-564, Berlin, Germany (October 1996) æ In Color.
- [60] M.S. Brennesholtz, "Light Collection Efficiency for Light Valve Projection Systems," *Proc. SPIE*, Vol. 2650, Projection Displays II, pp. 71-79 (1996).
- [61] J. Florence, R. Miller, and T. Bartlett, "Contrast Ratio in DMD-Based Projection Systems," to be presented at SID '97, Boston, MA (May 1997).
- [62] Digital Light Processing World Wide Web site: <http://www.ti.com/dlp>

# **Digital Light Processing™ for High-Brightness, High-Resolution Applications**

**Larry J. Hornbeck**

**Texas Instruments  
Digital Video Operations  
Dallas, Texas 75265**



**A TEXAS INSTRUMENTS TECHNOLOGY**

**Electronic Imaging, EI '97  
Projection Displays III  
Co-Sponsored by IS&T and SPIE  
An Invited Paper**

**10-12 February 1997  
San Jose, California USA**



Texas Instruments Digital Video Products Group  
P.O. Box 655012, MS 24  
Dallas, Texas 75265-5012

1-888-DLP-BYTI  
(1-888-357-2984)  
**<http://www.ti.com/dlp>**

Digital Video Products  
Texas Instruments  
Dallas, Texas 75265

© Texas Instruments 1997  
Product # DLP-0030

