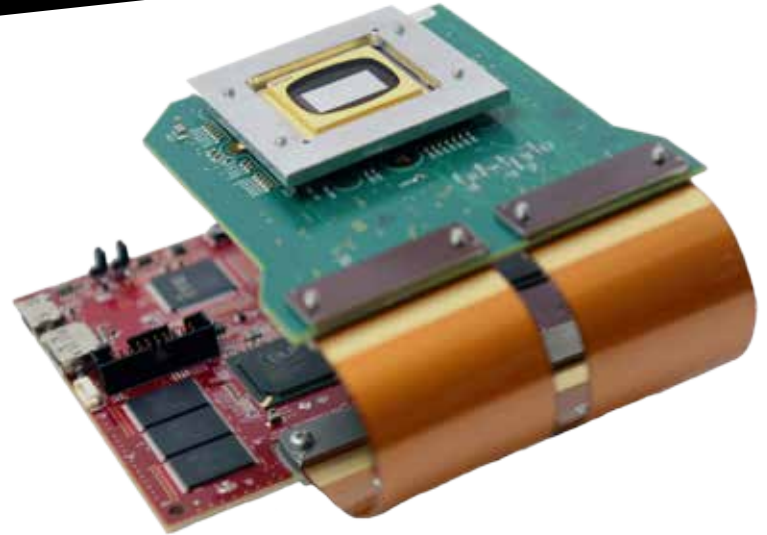


## KEY FEATURES & SPECIFICATIONS

- DLP® Digital Micromirror Device (DMD)
  - DLP9000 .9" WQXGA Type-A DMD
- DLP® Support Chip
  - DLPC900 Digital Controller
- Resolution
  - 2560 x 1600 (WQXGA)
  - > 4 Million Micromirrors
- Pattern rates
  - 1-bit - 9,500Hz
  - 8-bit - 250Hz
  - Video - 60Hz
- 2 configurable I/O triggers for synchronization with cameras and other external devices
- USB 1.1 / HDMI / DisplayPort
- Compatible with all Windows platforms



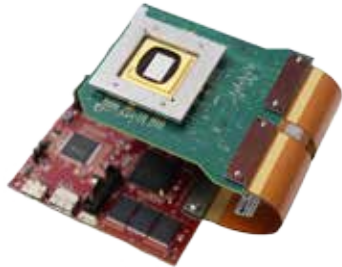
The **DLi9000 .9" WQXGA Development Kit** is a high performance, highly flexible DLP® development kit featuring over 4 million micromirrors and 2560 x 1600 resolution ideal for customizing industrial, medical and scientific applications.



### INCLUDES:

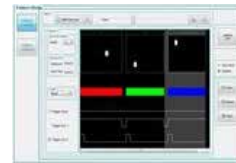
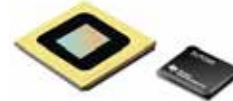
- ▶ DLP® LightCrafter™ 9000 Controller Board
- ▶ DLP DMD & Support Chip
  - ▶ DLP9000 .9" WQXGA Type-A DMD
  - ▶ DLPC900
- ▶ DMD Board
- ▶ DMD Hardware
- ▶ Flex Cables
- ▶ DLP® LightCrafter™ 9000 Firmware & Software Bundle
- ▶ Power Supply & Cable / USB Cable / HDMI Cable / DisplayPort Cable / GPIO Cable / Trigger Cable / Driver Cable

### SPECIFICATIONS



| Specification          | DLi9000 .9" WQXGA Development Kit                                |
|------------------------|--|
| Control Board          | DLP® LightCrafter™ 9000  |
| DMD Options            | DLP9000 .9" WQXGA 2xLVDS Type-A DMD                              |
| Support Chips          | DLPC900  |
| Window Coating         | VIS  |
| Controller Software    | DLP® LightCrafter™ 6500/9000 GUI<br>DLPC900 API                  |
| Resolution             | 2560 x 1600 (WQXGA)  |
| Micromirror Pitch      | 7.6µm  |
| Controller Interface   | USB 1.1<br>HDMI<br>DisplayPort                                   |
| Pattern Rates          | 1-bit - 9,500Hz<br>8-bit - 250Hz<br>8-bit Grayscale Video - 60Hz |
| USB Transfer Rate      | <0.5*fps   |
| On Board Memory        | 48MB Parallel Flash (2x)   |
| Binary Pattern Storage | 400  |
| I/O Triggers           | Master/Slave   |
| Configurations         | n/a  |
| Optics Module (OM)     | n/a  |

\*Typical value, can vary depending upon data compression ratio and PC used



- ✓ Represents the highest resolution DMD in the DLP® Advanced Light Control portfolio
- ✓ Pattern rates up to 9,500Hz
- ✓ Sync DMD to external devices such as CMOS & CCD cameras
- ✓ User-configurable controls (Pattern Rate, Bit Depth, I/O Triggers and LED Parameters)
- ✓ 4 modes of operation (video, pattern on the fly, prestored pattern and video pattern)