

DLi offers a wide array of **Parts, Accessories & Assemblies** to support your development & production EVMs such as the Discovery™ D4100, DLi41xx Bundle Series, LightCrafter 6500/9000, CEL5500 Light Engine, DLi3000, & Discovery™ D3000.

The following DLP® Chipsets are supported: DLP5500 0.55" XGA, DLP6500 .65" 1080p-Type A/Type-S, DLP9000 .9" WQXGA, DLP7000 0.7" XGA 2xLVDS, and DLP9500 0.95" 1080p 2xLVDS

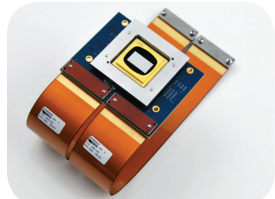
We also carry Parts & Assemblies for the Discovery™ 3000 0.7" XGA and D3000 .96" SXGA+ Legacy Platforms

KEY FEATURES

- Support the following DLP® Chipsets:
 - DLP5500 0.55" XGA
 - DLP6500 0.65" 1080p-Type A
 - DLP9000 .9" WQXGA
 - DLP7000 0.7" XGA 2xLVDS
 - DLP9500 0.95" 1080p 2xLVDS
- Parts & Assemblies also carried for:
 - Discovery™ 3000 0.7" XGA
 - D3000 .96" SXGA+ Legacy Platforms

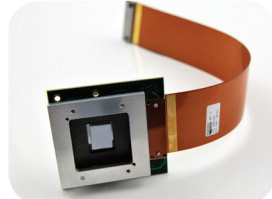
Parts & Assemblies

OFFERINGS



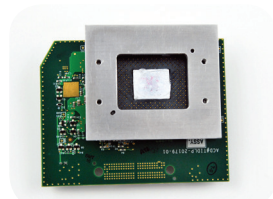
DMD Assemblies

- DMD
- 0.7" XGA 1xLVDS (VIS/UV)
- 0.7" XGA 2xLVDS (VIS/UV)
- 0.95" 1080p 2xLVDS (VIS/UV)
- 0.95" SXGA+ 1xLVDS (VIS)
- 0.96" WUXGA 2xLVDS
- Flex Cable(s) (2x for 1080p)
- DMD Remote Board
- DMD Interposer
- DMD Mounting Hardware Assembly



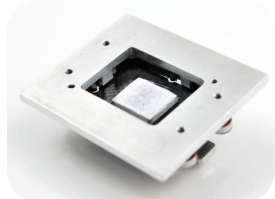
DMD Flex Cable Assemblies

- Flex Cable(s) (2x for 1080p)
- DMD Remote Board
- DMD Interposer
- DMD Mounting Hardware Assembly



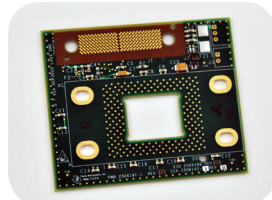
DMD Board Assemblies

- DMD Remote Board
- DMD Interposer
- DMD Mounting Hardware Assembly



DMD Hardware Assemblies

- DMD Interposer
- Interface, Header Spreader & Backer Plate
- Stud Block & Kapton Insulator
- Mounting Screws & Thermagon Pad
- Spring, Stud Retainer



DMD Boards

- DMD Remote Board
- DMD Interposer
- DMD Mounting Hardware Assembly



DMD Flex Cables

- 5" or 12" 1xLVDS - 0.7" XGA
- 5" or 12" 1xLVDS - 0.96" SXGA+
- 5" or 12" 2xLVDS - 0.7" XGA
- 5" or 12" 2xLVDS - 0.95" 1080p (x2)

shop online by visiting the **DLiStore** at dlinnovations.com/shop

DLi DIGITAL LIGHT
innovations

Your DLP® & Optics Partner • A Texas Instruments Authorized Design House

12317 Technology, Blvd., Ste. 100 • Austin, Texas • (512) 617-4700 • dlinnovations.com